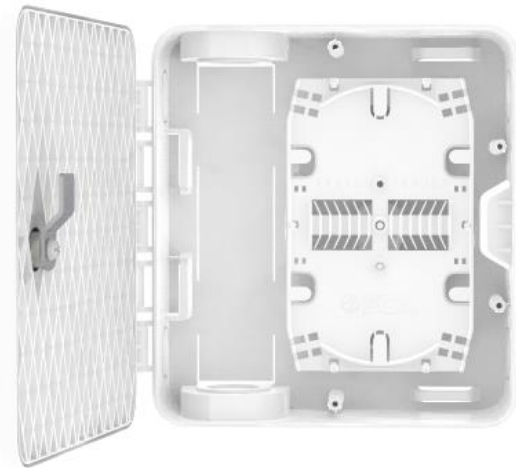


INCO

Fiber Optic Splice Box for FTTH indoor applications.



Fiber Optic Splice Box INCO



Fiber Optic Splice Box INCO

features:

- up to 24pcs thermal splices or 12pcs mechanical splices
- suitable for Raiser cable with pigtails 0.9mm
- safe storage for excess subscribers cables
- possibility of entering vertical HDPE pipe up to dia.37mm
- subscribers cable's inputs on the left and right side of the box
- pass-through inputs for Raiser cable on the top and bottom of the box
- key-lock door
- cable inputs protected by stepped cable glands

accessories:

- splice tray with cover
- key lock
- dowels
- cable ties

optional accessories:

- splice sleeves

norms/certificates:

- UL 94-V0
- IP 41
- IK 10
- RoHS

sectors:



INCO

technical specifications:

INCO	
dimensions [width x height x depth] [mm]	194 x 202 x 60
type of splice tray	SK-24-FCA
maximum number of splice trays	1
maximum number of thermal splices	24
total number of cable inputs	6
diameter of subscribers cables inputs	28
maximum diameter of HDPE pipe [mm]	37
weight [kg]*	0.5
material	ABS
type of key-lock	Eurolock

* weight of empty box

configuration:

part number	description
INCO	Fiber Optics Indoor Splice Box PMSN-24