
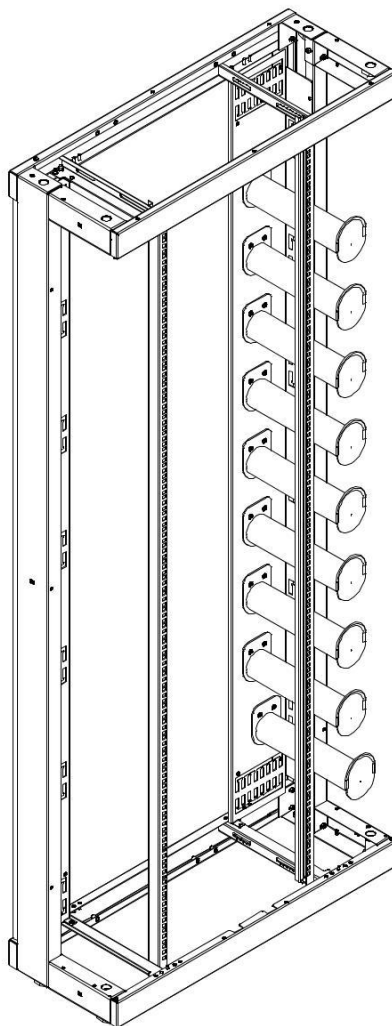


INSTALLATION INSTRUCTIONS

	Company	FCA Sp. z o.o.
	Model	SPS
	Date of issue	24.10.2014
	Update date	10.05.2021
	Document version	1.1
	Prepared by	Artur Ryncarz



Optical Distribution Frame SPS-20 SPS-22 SPS-26

We reserve the right to change, correct and improve the product.
According to that the drawings and photos on the pages can be insignificantly different then the actual state.

Table of contents
1. Specifications
2. Equipment
3. Installation of components
4. Wiring examples
5. Health and safety conditions and operational markings
6. Warranty

1. Specifications.

parameters	type		
	SPS-20	SPS-22	SPS-26
width [mm]	900	900	900
height [mm]	2000	2200	2600
depth [mm]	350	350	350
rack height [U]	41	46	54
type of break-out plate	SPS-MRK-19-1		
max number of break-out plates	2	2	2
cable entrances	top/down		
weight [kg]	~42	~46	~54
IP*	30		
material	steel / painted aluminum		
color	RAL 7035		

*does not apply to a cabinet without a top metal plate or with a brush

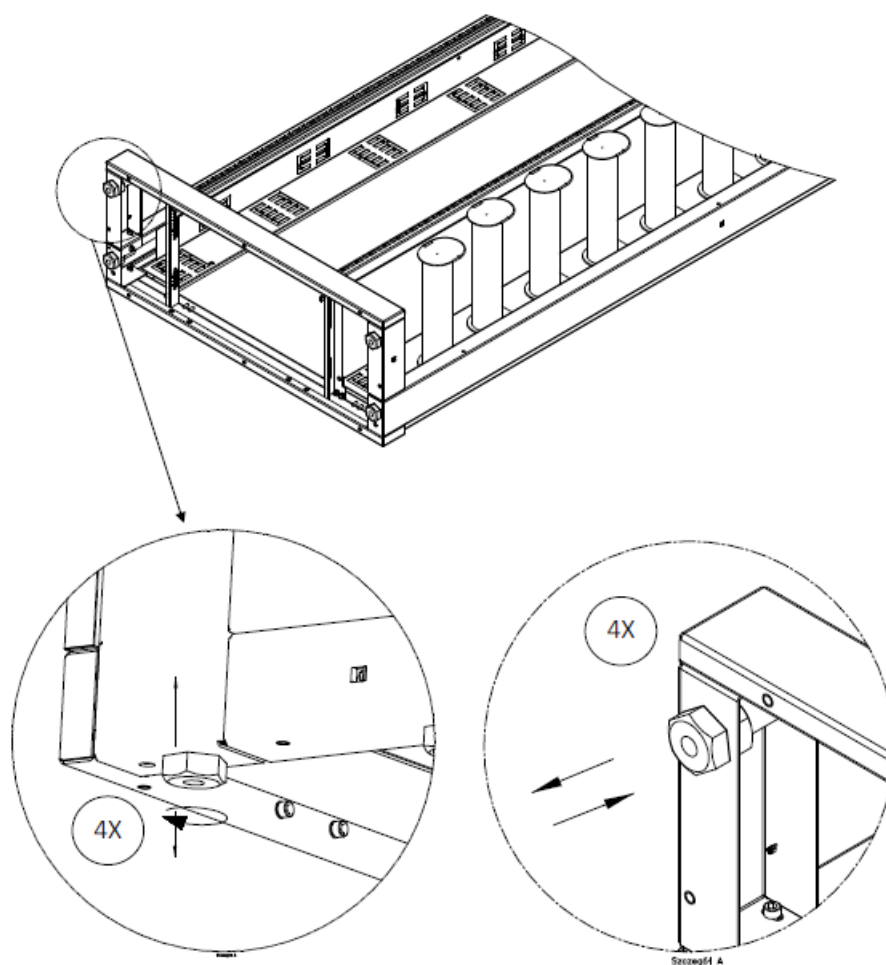
2. Equipment *.

No	name	psc
1	SPS cabinet	1
2	side panels	acc. to configuration
3	front doors	acc. to configuration
4	SPS-MRK-19-1 additional break-out plate	optional
5	SPS-DKPL-1 bottom routing channel	optional
6	SPS-ZM-PT raised floor fixing kit	optional
7	SPS-ZM-PB concrete floor fixation kit	optional
8	SPS-ZM-SC wall fixation kit	optional
9	SPS-ZM-ST baying kit	optional
10	SPS-PSZ brush panel	optional
11	SPS-PS-1 top cover plate	optional
12	SPS-KDOK document holder	optional
13	grounding kit	set

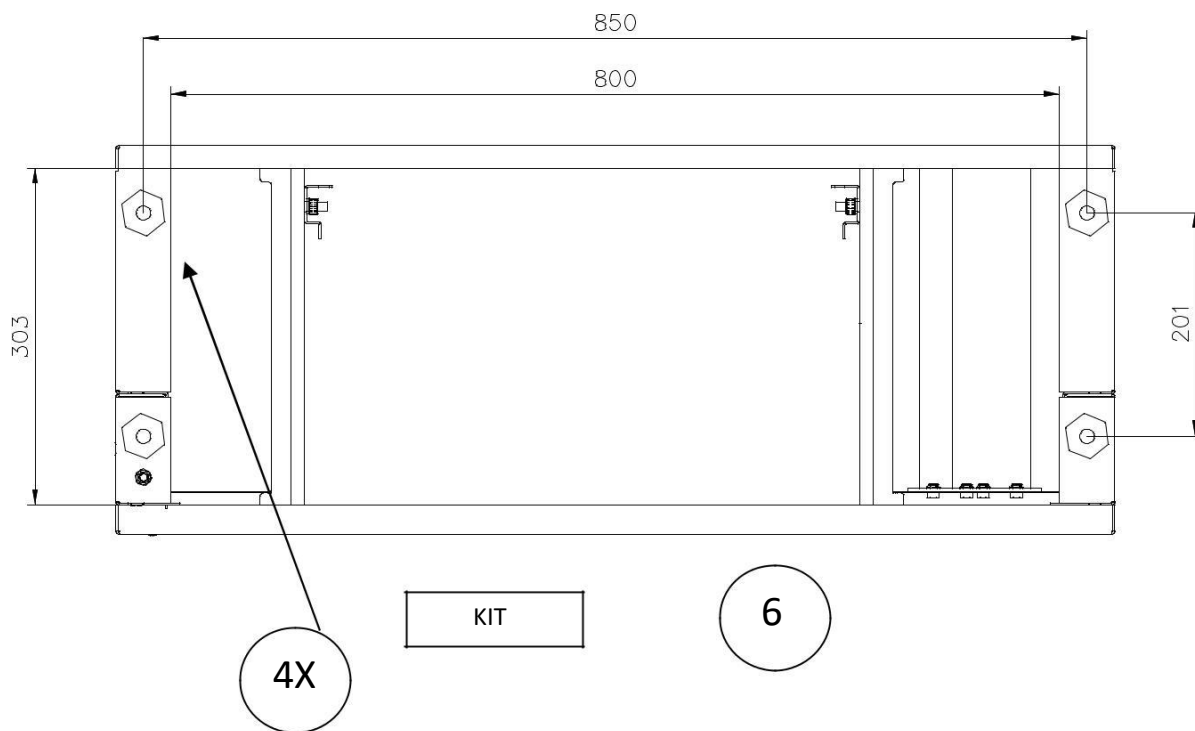
3. Installation of components.

A) Adjustment and cabinet leveling.

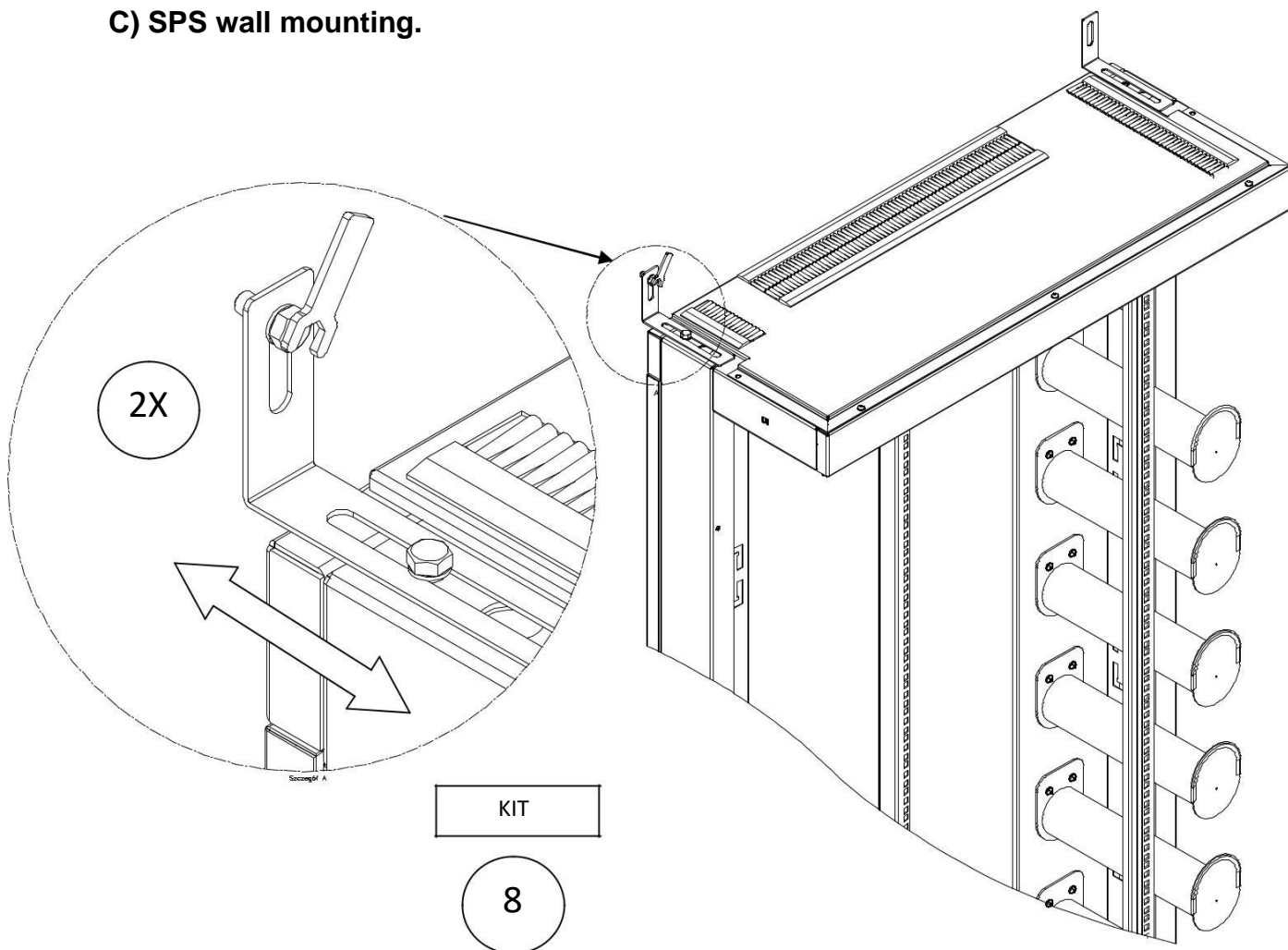
Determine the position of the mounting brackets. The mounting depth of the box can be smoothly adjusted, also in case of mounting to the rear beams.



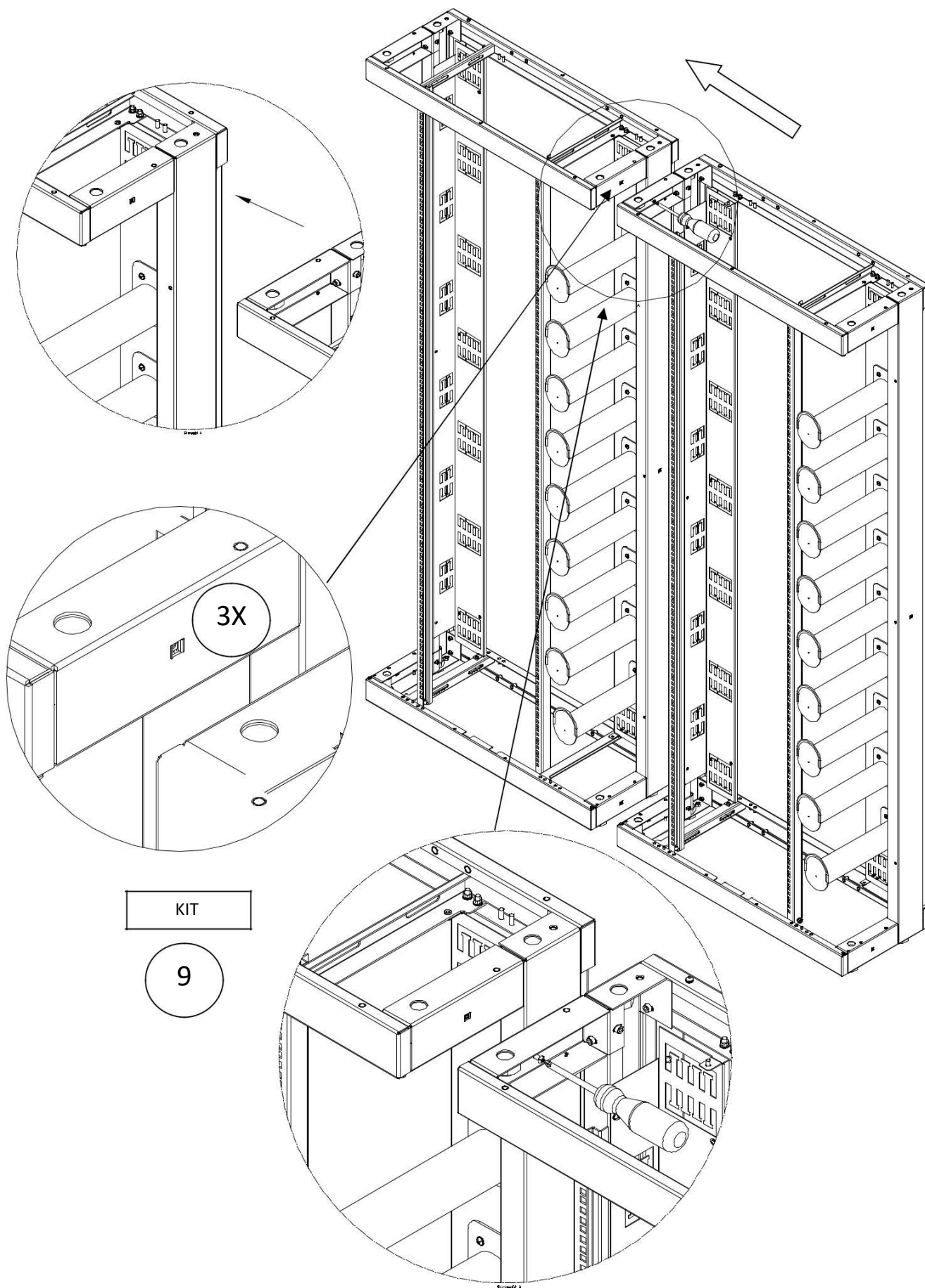
B) SPS floor mounting.



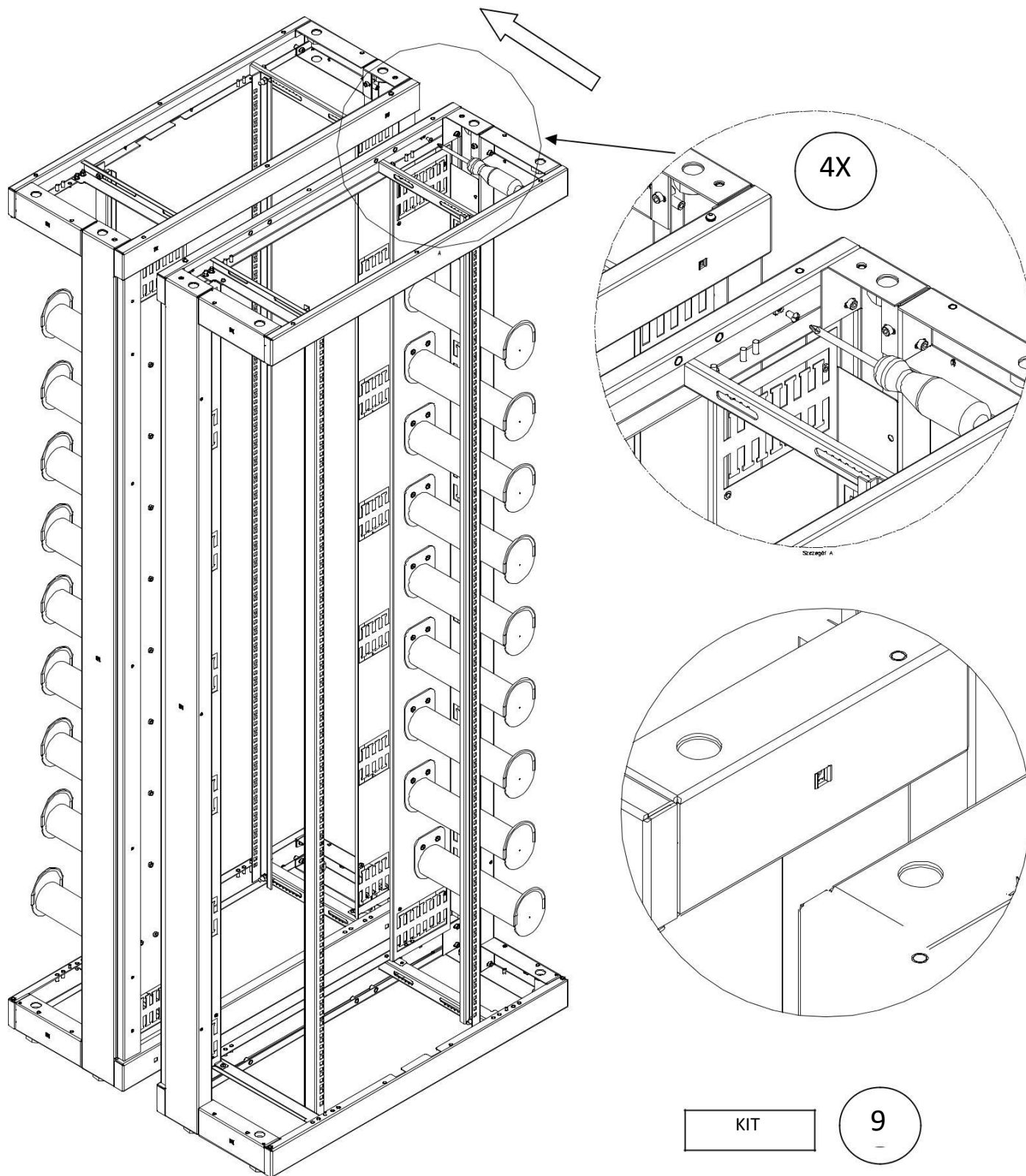
C) SPS wall mounting.



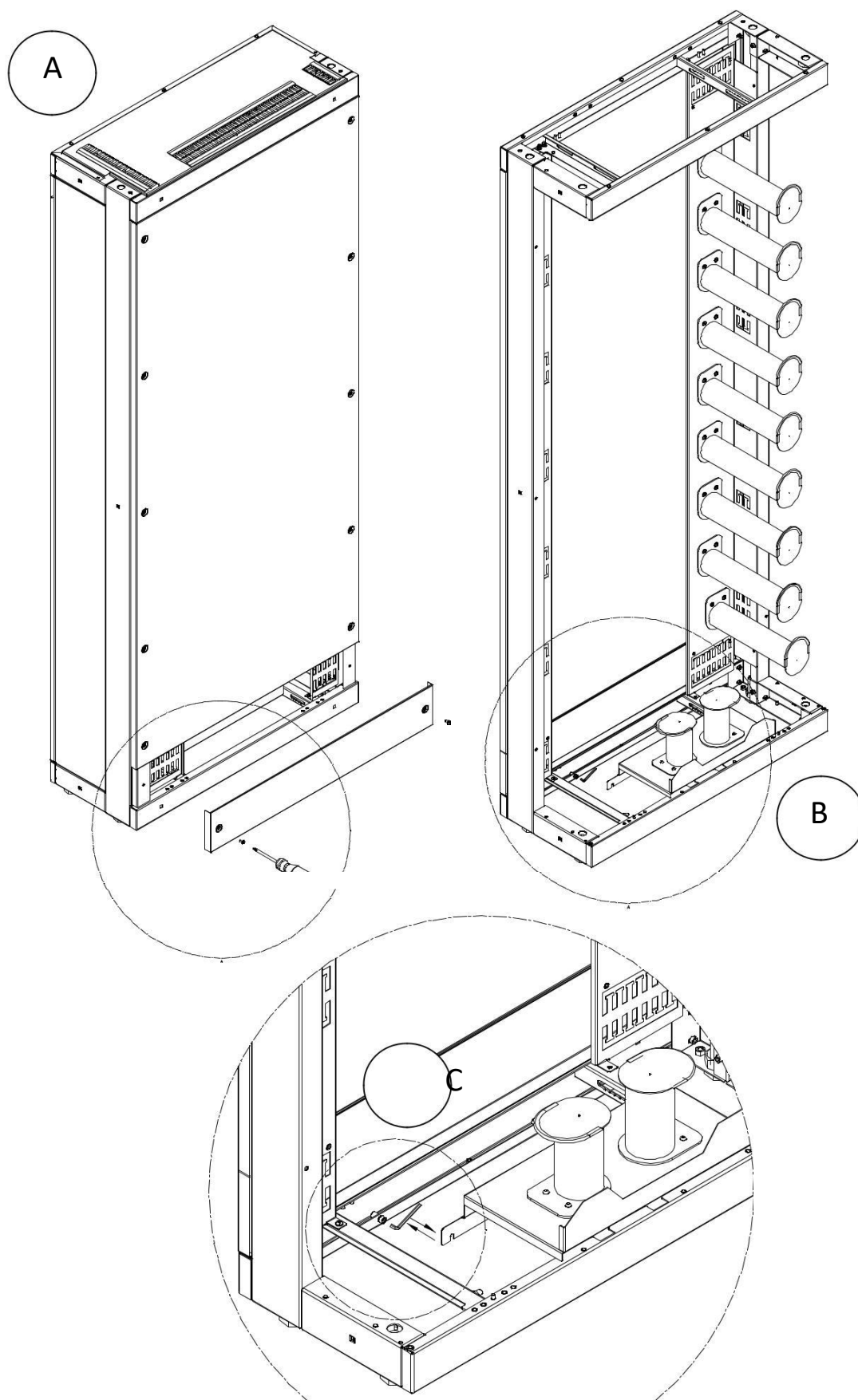
D) SPS side mounting.



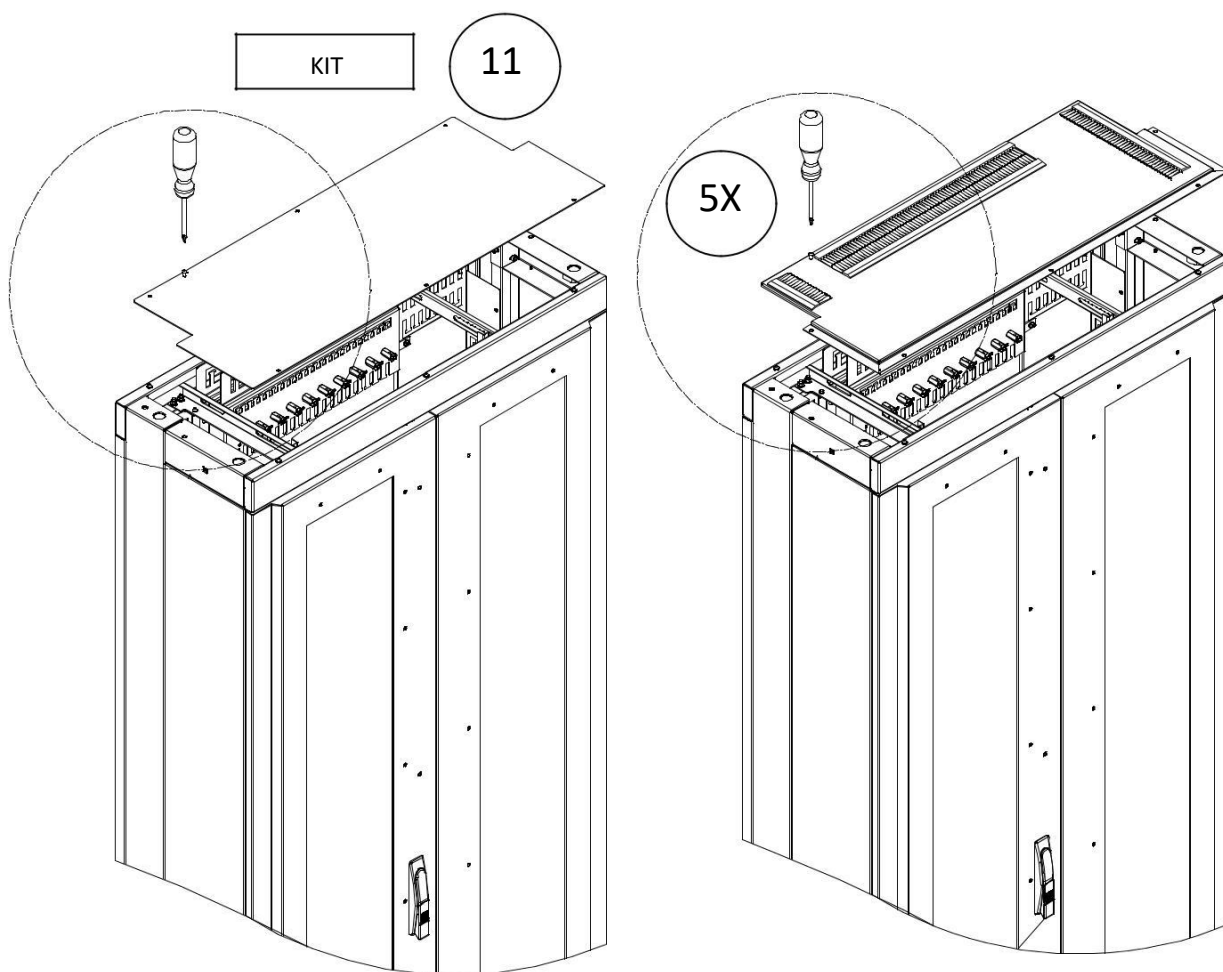
E) SPS back mounting.



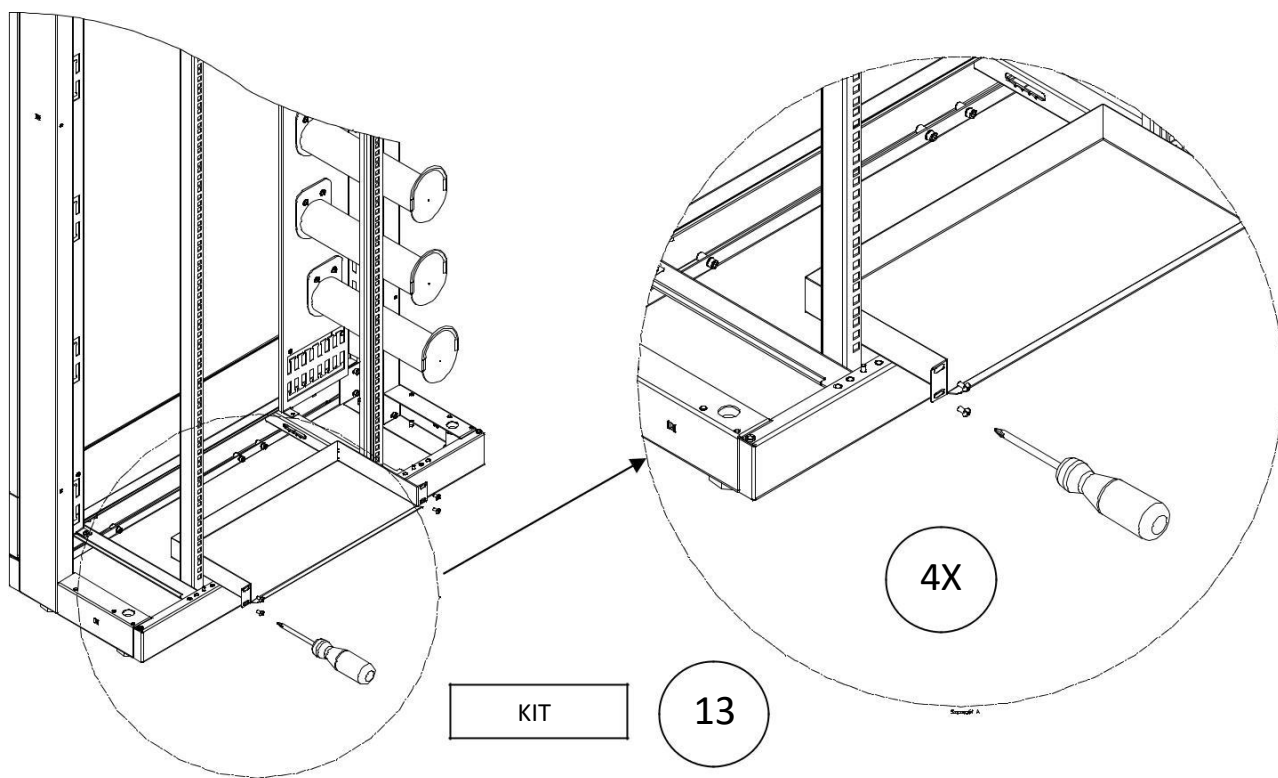
F) Usage of bottom routing channel (side or back mounting)



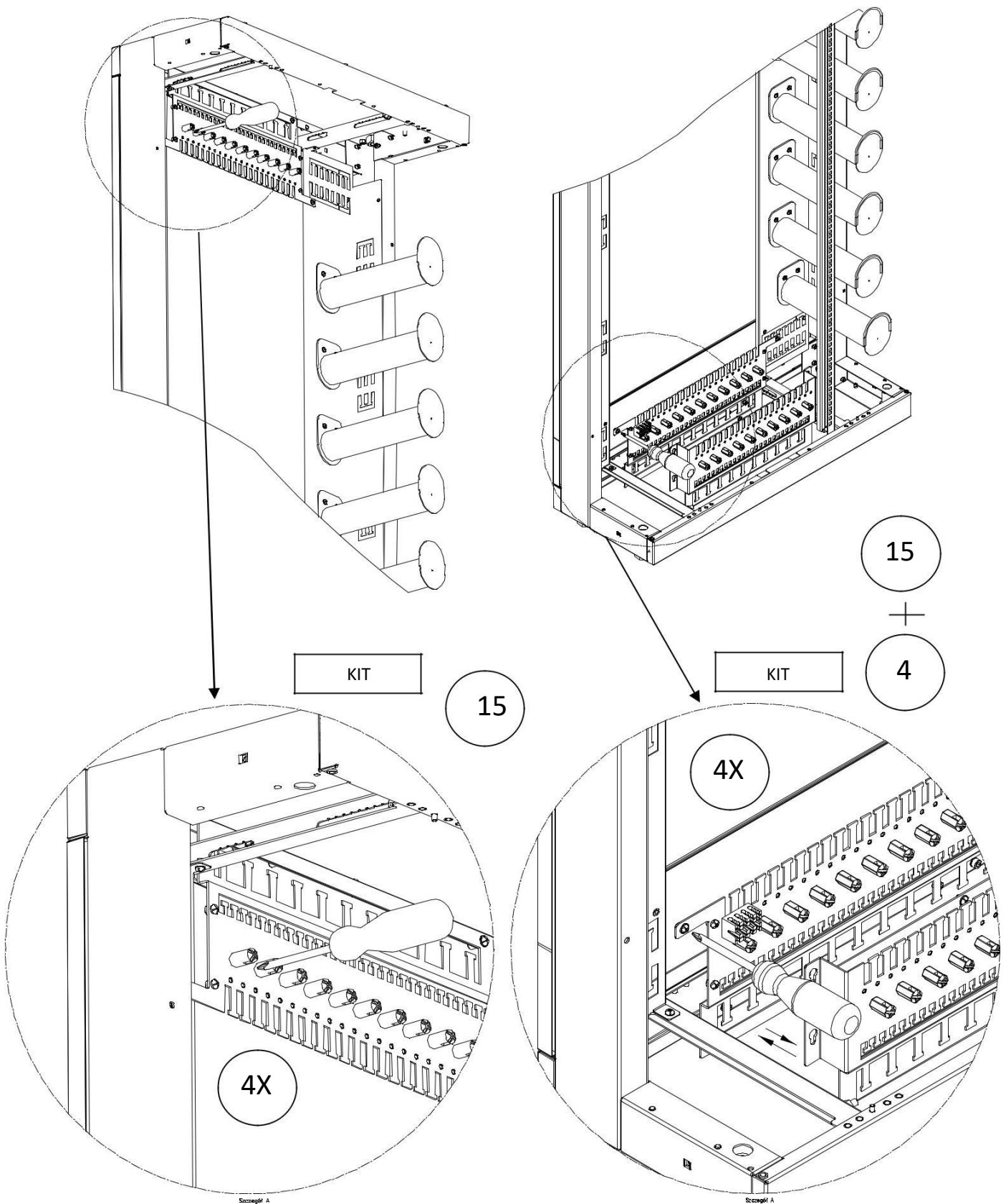
G) Assembly of the top plate and brush opening



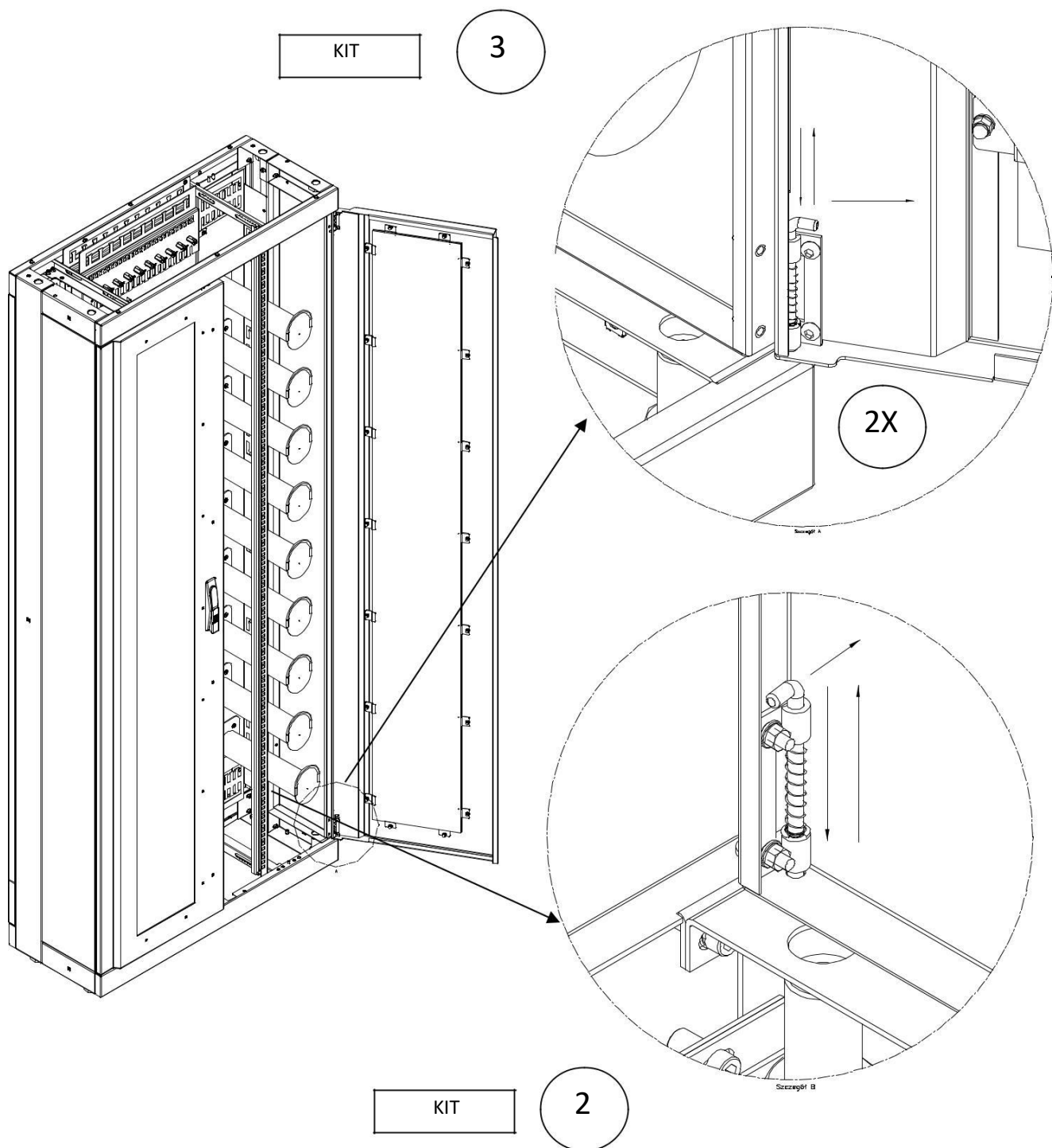
H) Mounting of documentation drawer (sample place)



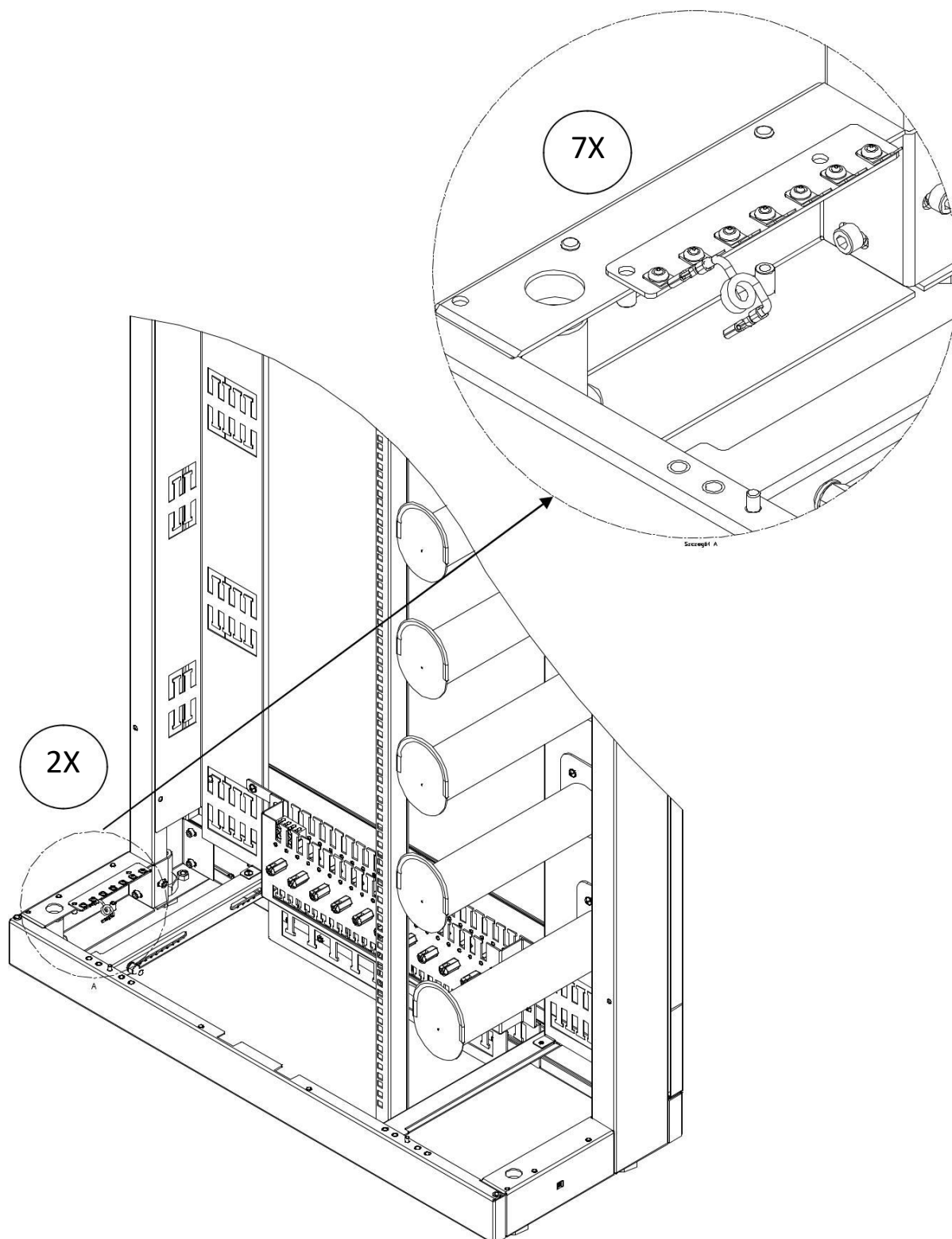
I) Mounting of break-out plate (sample places)



J) Mounting of doors and side panes

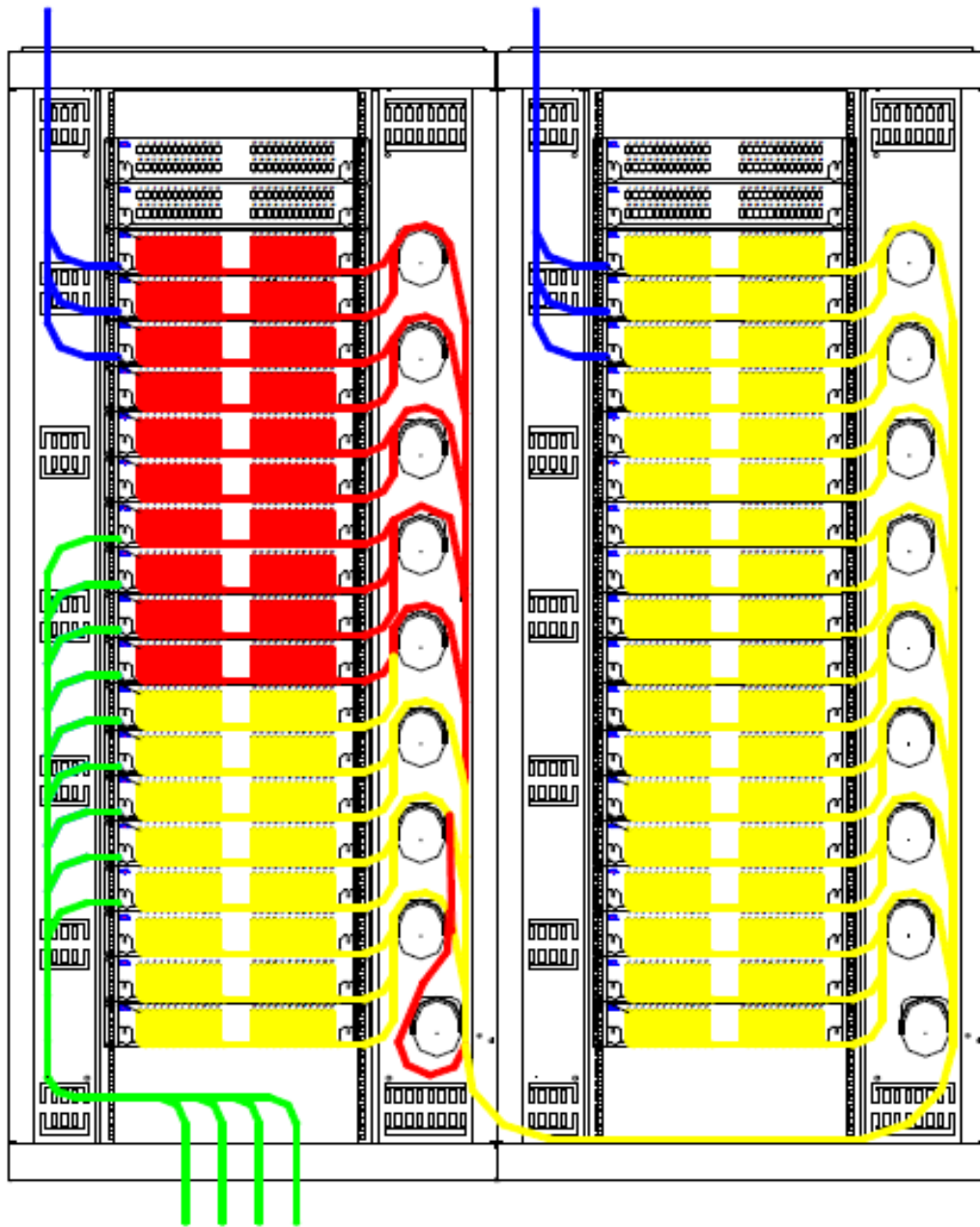


K) Grounding the cabinet.



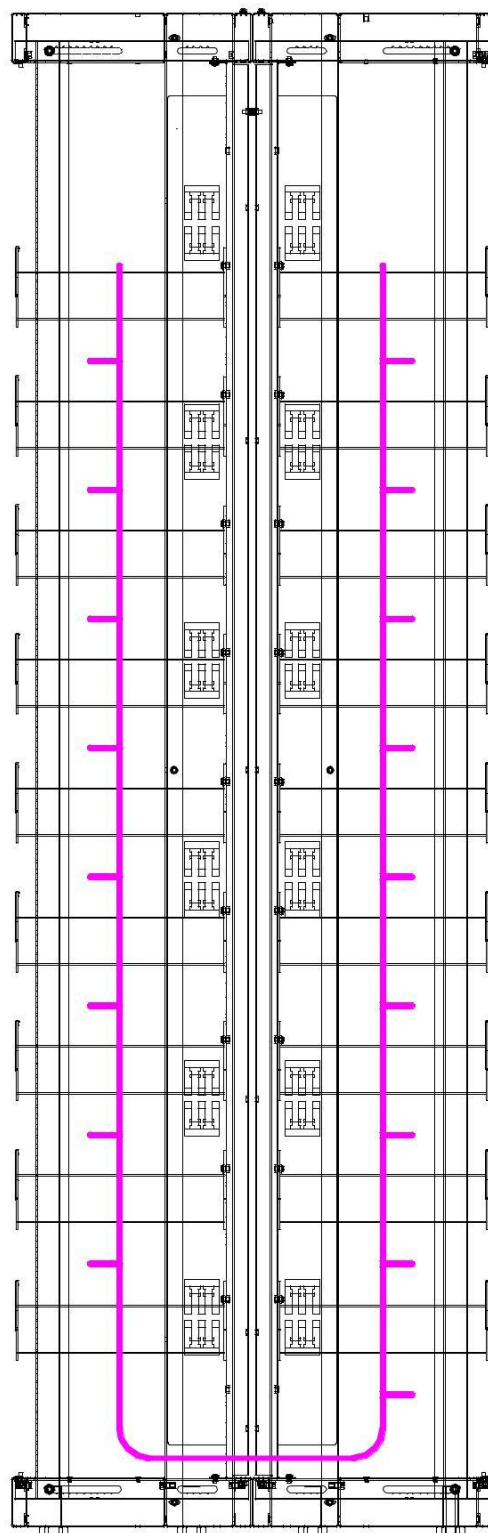
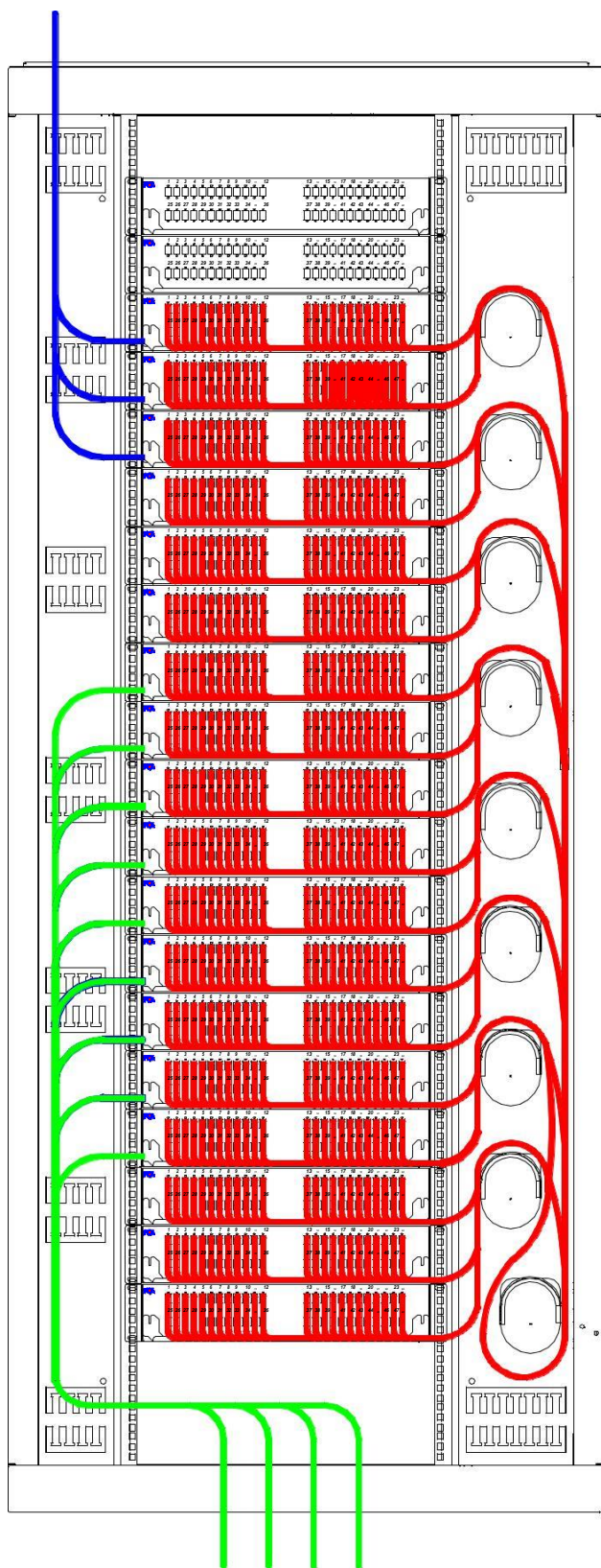
4. Wiring examples





a) side by side



- patchcords between cabinets
- patchcords / pre-terminated bundles (in/out)
- patchcords inside the cabinet (each to each)
- fiber optic cables (in/out)

- b) singular cabinet
- c) back to back



	patchcords between cabinets
	patchcords / pre-terminated bundles (in/out)
	patchcords inside the cabinet (each to each)
	fiber optic cables (in/out)

5. Health and safety conditions and operational markings.



WARNING!

Special precautions must be taken when working in contact with optical fibres (e.g., during splicing). Their broken or severed ends can easily penetrate the skin and be particularly dangerous to eyes, lips, etc.

Invisible laser radiation is dangerous to eyesight. Do not look directly at the end of the optical fibre terminated by a connector, into the interior of the adapter in the ODF or transmission device. The laser warning sign is located outside the switch and marked with the symbol for Class 3B (according to IEC-825 Clause 5.9).