

**luna**<sup>TM</sup>

# Data Center Solutions

[visit website](#)



## Meet Luna

The server rack, part of a solution that is a comprehensive proposal for cold aisle containment

### Durability

allows loading of rack uprights with a total weight of 1500 KG, which is confirmed by tests.

### Functionality

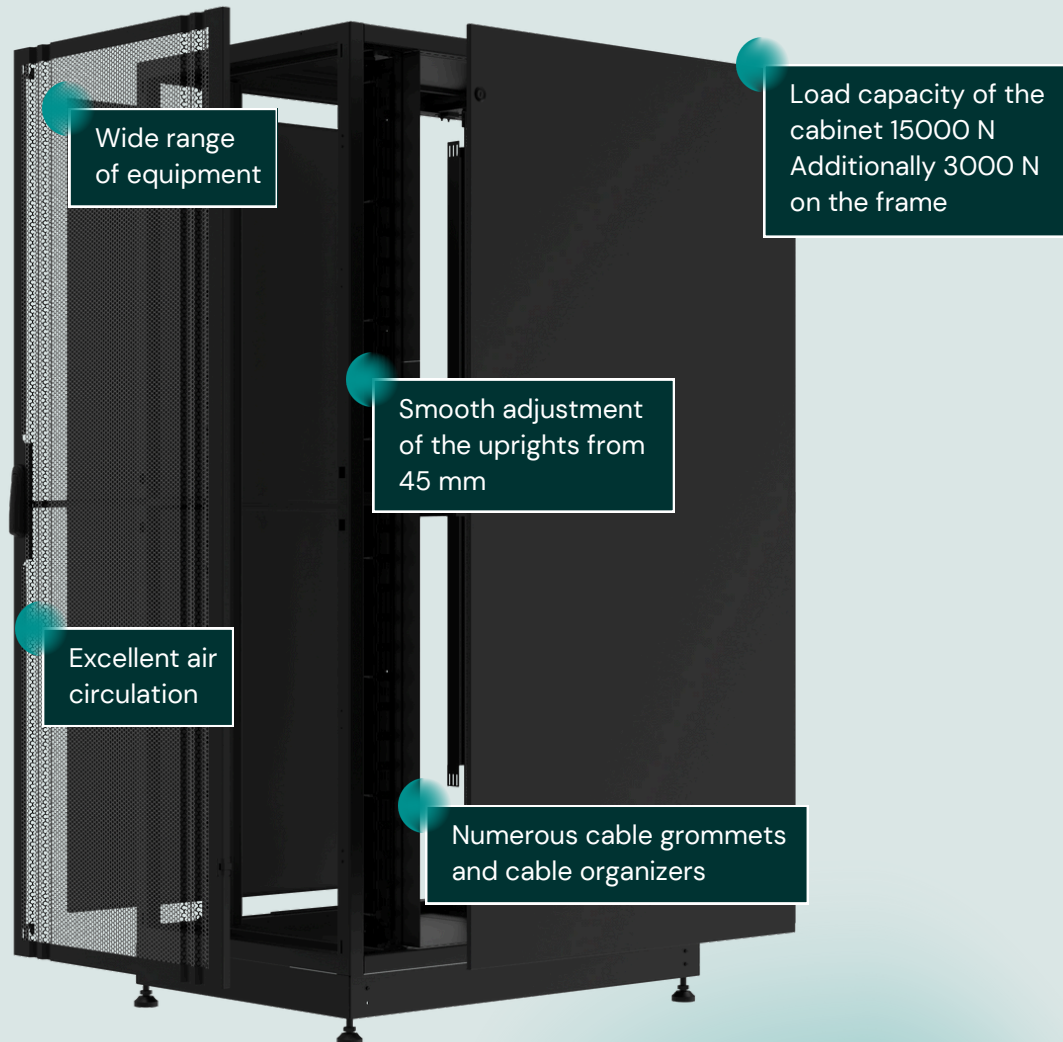
as a result of research, we have identified dozens of factors that affect the comfort of the rack. When designing Luna we implemented all of them. The main feature is the adjustable spacing of the uprights in the range of 19", 21", 23" and the smooth adjustment of the uprights on the depth of the support frame over the entire range.

### Simplicity

we took care to ensure that the design of the server rack is perfect in its simplicity and free of unnecessary complications, making it easy to use and allowing customization.



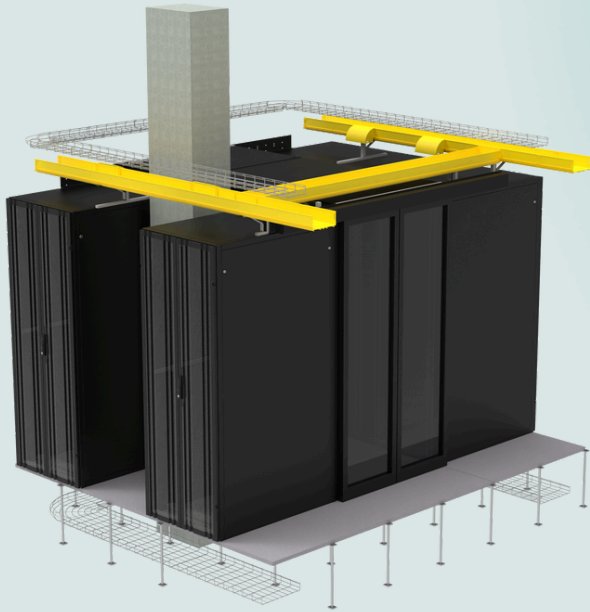
# Take a closer look at a few elements



## Additional equipment

- |                      |                          |                              |                             |
|----------------------|--------------------------|------------------------------|-----------------------------|
| floor panels         | sliding doors for aisles | simple door and double doors | safety glass door           |
| perforated door      | blind door               | vertical cable management    | horizontal cable management |
| fan ventilation unit | plinth                   | cable entry brushes          | grounding bar               |





# Cold aisle containment

When creating cold aisle containment, we act comprehensively: starting with an audit through design to full installation. In this way, we avoid possible infrastructure collisions and ensure security for ICT equipment.

The construction of the cold aisle containment provides an **effective separation of the cold zone** from the hot zone, which allows **efficient management of the cool air** conducted to the cold aisle containment and the reception of heat generated by the devices.

Luna's solution provides an **optimal flow of coolness** favorably influencing the operation of devices, **guaranteeing them appropriate working conditions.**

And this, as you know, directly translates into **savings**: first, from minimizing the risk of device breakdowns, and second, from the savings generated by reducing the cost of air conditioning.

The flexibility of the solution **allows the technology to match the existing architecture** of the server compartment. This is due to the customization of "site-specific" development elements, which allow you to combine cabinets of different widths and depths, as well as to use elements for blanking the cabinets, for example, on the support column or blanking the corridor in the case of termination with the face of the chamber wall.

Design agreement and pre-implementation visualizations will allow a professional team of specialists to **tailor a solution to individual needs.**



## Modularity

The possibility of building a cold aisle containment consisting of server racks of different heights or widths, including the use of blinded racks or aisles, makes it possible to make a development adapted to the limitations imposed by the architecture of the building.



## Zone separation

Ensure adequate separation of the cold and hot air zones through the use of cold aisle containment construction and side covers, bulkheads or blinds.



## Lighting

Ensure the installation of adequate corridor lighting for service personnel, including appropriate cable routes.



## Plinth fixing

The possibility of installing server racks on a plinth with appropriate cover panel to ensure proper air circulation.



## Connectors

They allow cabinets to be combined in rows stabilizing them, strengthening them and allowing better load distribution in the cold aisle containment.



## Doors

They can be implemented as fully automatic, manual with auto-close or also be blinded if necessary.





Have any questions?  
Contact our Global Sales Team!



**Maciej Sanocki**  
Export Presales  
+48 510 140 017  
[m.sanocki@fca.com.pl](mailto:m.sanocki@fca.com.pl)



**Paweł Więckowski**  
Export Manager  
+48 506 136 859  
[p.wieckowski@fca.com.pl](mailto:p.wieckowski@fca.com.pl)



**Michał Koterba**  
Key Account Manager  
+48 501 976 066  
[m.koterba@fca.com.pl](mailto:m.koterba@fca.com.pl)



**Piotr Kowaliński**  
Product Manager  
+48 698 699 774  
[p.kowaliński@fca.com.pl](mailto:p.kowaliński@fca.com.pl)



[www.fca.com.pl](http://www.fca.com.pl)